



The Charolais Pavilion,  
Avenue M,  
Stoneleigh Park, Kenilworth,  
Warwickshire, CV8 2RG  
t: 024 76 697731  
f: 024 76 697776  
www.rugbyfarmersmart.com  
Holding No. 43-139-8013

Office Hours: Monday to Friday – 9.00am to 5.00pm  
Opening Time: Gates open at 5.30am until further notice

## **Market Reports For Monday 22nd February 2016**

### **Market At A Glance**

Prime Steers to 217p/kg & £1,515  
Prime Heifers to 212p/kg & £1,247  
Prime Bulls to 216p/kg & £1,581  
OTM's to 156p/kg & £1,376  
Hoggs to 206p/kg & £102  
Hogg SQQ to 195.22p/kg  
Cull Ewes to £125  
Calves to £215  
In Calf Cows to £1,480  
Stores to £1,085

**Monday 7th March  
Sale of Store Cattle**

Catalogues & Entry Forms available by post, email or on the website  
[www.rugbyfarmersmart.com](http://www.rugbyfarmersmart.com) ~ [admin@rugbyfarmersmart.com](mailto:admin@rugbyfarmersmart.com)

## **CATTLE: 203 forward**

### **Prime Cattle : 41 forward**

An expanded yarding of cattle with more due but deferred to next week. Every week the same thing and drops on the deadweight but trade today for 'the goods' well ahead of comparison.

In the Steers some quality at the top end with J Baylis & Partners, Buckingham travelling up with a lorry load to take advantage of weighted Steers at 217p/kg and £1515. Other R Grade Steers to 184p/kg from Steve Webster which have to die at 60% to get back to parity with the grid. R Grades around the 180p/kg mark generally.

Heifers harder to sell today but topping at 212p/kg again from Messrs Baylis & Partners with Parry Walters and Richard Heckford trading at 200p/kg. Messrs Baylis though taking £1247.

Trade here representative of the market place with buyers all around the ring. Perhaps as an industry we should stop looking within and ask why the beef trade continues to drop. Exchange rates are reasonably favourable in comparison to recent years, so is it really true that the general house is not consuming the meat it was six months ago?

### ***Auctioneer: Tom Wrench***

STEERS: 10 forward			
Top prices per head			
Limousin x	698 kgs	£1,514.66	JB Baylis & Partners
Limousin x	744 kgs	£1,346.64	JB Baylis & Partners
Blonde x	730 kgs	£1,277.50	WDC Jones
Limousin x	720 kgs	£1,209.60	RW Cross & Partners
Limousin x	702 kgs	£1,193.40	RW Cross & Partners
Top prices per kilo			
Limousin x	698 kgs	217 p/kg	JB Baylis & Partners
Limousin x	591 kgs	184 p/kg	S Webster
Limousin x	744 kgs	181 p/kg	JB Baylis & Partners
Blonde x	730 kgs	175 p/kg	WDC Jones
Hereford x	678 kgs	173 p/kg	S Webster

HEIFERS: 20 forward			
Top prices per head			
Charolais x	636 kgs	£1,246.56	JB Baylis & Partners
British Blue x	745 kgs	£1,221.80	RT Coley & Partners
Limousin x	632 kgs	£1,200.80	JB Baylis & Partners
Limousin x	564 kgs	£1,195.68	JB Baylis & Partners
Limousin x	632 kgs	£1,194.48	AE & AM Tacy
Top prices per kilo			
Limousin x	564 kgs	212 p/kg	JB Baylis & Partners
Limousin x	540 kgs	200 p/kg	DTP & PA Walters
British Blue x	563 kgs	200 p/kg	RJ Heckford
Charolais x	636 kgs	196 p/kg	JB Baylis & Partners
Limousin x	632 kgs	190 p/kg	JB Baylis & Partners

### **Bulls : 7 forward**

More Bulls about today to meet a real smart trade. Black and Whites to 164p/kg but top of the tree a 28 month old Limousin from Richard Heckford at 216p/kg to gross just shy of £1600.

### ***Auctioneer: Tom Wrench***

### **Cows & Stock Bulls : 18 forward**

A swift trade again and this despite announcements on the day of a drop of the Cow bid price. Top a Grade 2 Cow from Bill Windridge at 156p/kg with weight to take £1263. Other Grade 3 Cows saw Tom White at 135p/kg whilst others from Angela Tarry Smith at 118p/kg.

A pair of Stock Bulls today and possibly the best trade in the market with a 1250kg Simmental from Messrs Webb, Towcester to 102p/kg and £1275 whilst a Limousin from Messrs Baylis & Partners saw 139p/kg and £1377.

### ***Auctioneer: Tom Wrench***

## **Store Cattle : 132 forward**

An improved entry and a trade ahead of anything else this year thus far. We started with a part herd dispersal of in calf Cows from Peter Calcott, Sheepy Magna seeing in calf 2011 Blue Cows take £1480 with Limousin Cows to £1400 and others £1370. More quality Cows from the same home next sale.

A swift start in the Store Cattle with baby Black and White Bulls to £260 at 7 months from Basil Page. New vendors L Middlemas saw £780 for South Devon Steers at 9 months of age. Strong Blonde Suckled Calves at 10 months from Roger Wixey saw a pen full at £870, with Shorthorn brothers the same. Merris Bros, Northampton showed Angus again to see Steers £855 at 10 months whilst Limousin quality at equal age saw £870. Moving up the ages, real quality Angus from Woods Farm Meriden took £910 for a pen full of 13 month old Steers with others at £805. Richard Wright nearly had to take his hat off when reaching £980 for a 14 month old Limousin Heifer with its brother £985. Late entries from Steve Abbott saw Simmental Steers at 15 months to £960. Up the ages and Shipston on Stour vendors J Rutter & Son saw bucket reared stores at 20 months take Simmentals to £925. R V Tomlinson, Market Bosworth returned to see £980 for Charolais Steers at 20 months whilst S J Cartwright Ltd, Griff saw slightly older Simmental Heifers to £955. 22 month old South Devon Heifers from TJ Dewes saw £1060 but top today to M R Grindal & Son with Limousin Steers £1065 at 18 months, others equal age at £1070 and Simmentals of the same age group £1085.

A full ringside but sustainability of the Stores must of course relate to and follow the fat trade. Again perhaps now is the time for intervention from the farming unions into the state of the Beef industry.

***Auctioneer: Tom Wrench***

## **Calves : 12 forward**

A larger show of Calves met by a sharp trade. Topping today a Limousin x Bull Calf from PC Cox to £215 with brothers all at £200. Sussex Bulls to £120 with sisters to £80. Black & Whites to £61.

***Auctioneer: Tom Wrench***

## **SHEEP: 2,810 forward**

### **Prime Hogs: 1,701 forward SQQ 195.22p/kg**

The smallest yarding for some time but none the less 1700 plus Hogs in the aisles. A sharp downturn in trade in the middle of last week and dead-weight reductions but trade again built up over the weekend with this centre returning an SQQ equal to the week prior at 195.22 p/kg. Trade throughout the weights and of anything a show of Hogs that must be reported as poor in quality generally. The Euro spec Hogs continue to be wanted and today nearly 200 Hogs trading at 200p/kg or more. Top this week in the Euro spec to S M Tyler for his overnight Beltex Hogs at 44.5kg at 204p/kg with 45kg at 205p/kg. Bob Rutter first in the draw sold 45kg Texels to 206p/kg. F A Walker 204p/kg for overnight Texel x Cheviot at 40.5kg and R Goodman, Thame the same for 45.5kg. In the heavies a top p/kg of 205p/kg from Andy Mitchell for 46kg Charollais with others 202p/kg whilst AEJ & FJ Claridge took 202p/kg for 47kg Texels. In the lump a top for the Euro section of £92.50 at 45kg from Bob Rutter whilst S M Tyler, Leicester took £91.50 for 44.5kg meat Hogs. Overall, heavies in great demand to see a top of £102 for 62.5kg from R Haynes, Daventry whilst Rich and Lynne Smith saw 67kg Suffolks at £100. Messrs Morris, Buckingham £99 for 56.5kg Texels with 51kg £97.50 equal with Angela Tarry-Smith.

Trade today surpassing predictions, producers please though ensure that Hogs are fit before marketing.

***Auctioneer: Tom Wrench***

Prime Hogs: 1,701 SQQ (195.22p/kg)			
Per kilo - EURO under 45.5kg			
Beltex x	44.50 kgs	206 p/kg	SM Tyler
Texel x	45.00 kgs	206 p/kg	RG Rutter & Son
Texel x	44.00 kgs	205 p/kg	SM Tyler
Texel x	40.50 kgs	204 p/kg	FA Walker
Texel x	43.00 kgs	203 p/kg	Fernhill Farms

Per head			
Texel x	45.00 kgs	£92.50	RG Rutter & Son
Beltex x	44.50 kgs	£91.50	SM Tyler
Texel x	44.00 kgs	£90.00	SM Tyler
Texel x	44.00 kgs	£89.00	AEJ & FJ Claridge
Texel x	44.50 kgs	£88.50	RG Rutter & Son

Per kilo - HEAVIES 45.5kgs plus			
Charollais x	46.00 kgs	205 p/kg	DP Mitchell & Son
Charollais x	45.50 kgs	204 p/kg	R Goodman
Charollais x	46.00 kgs	202 p/kg	DP Mitchell & Son
Charollais x	47.00 kgs	202 p/kg	AEJ & FJ Claridge
Beltexl x	46.00 kgs	200 p/kg	SM Tyler

Per head			
Charollais x	62.50 kgs	£102.00	R Haynes
Suffolk x	67.50 kgs	£100.00	JK Smith & Sons
Texel x	56.50 kgs	£99.00	M Morris
Texel x	51.00 kgs	£97.50	M Morris
Charollais x	55.50 kgs	£97.50	A Tarry-Smith

### Store Hogs : 150 forward

Numbers rapidly frying up as the season moves on. Trade though just as keen although buyers clearly starting to get full. Top this week CS Taylor LLP, Warwick with framed sorts at £76 whilst Colin Whitehead took £74 equal with Richard Batchelor. T Barber & Sons, Barford £71. Mid keep trading £69 to £64 and short term £63 to £53 only the very small less.

**Auctioneer: Tom Wrench**

### Cull Ewes : 332 forward

Just 332 Ewes forward today met another swift trade to show an average of £76. Top today C W Thomas for a pen of 10 Charollais Ewes at £125 ahead of Rory Long at £114 for Texels with K Crabtree travelling north to take £105. Top Suffolks £96 for G A Royans & Son. Top Mules this week to £85 from R Haynes whilst Mark Martin had £84 for Mules. More needed next week

**Auctioneer: Tom Wrench**

Cull Ewes & Rams: 332 forward					
Charollais	£125.00	CW Thomas	Texel	£93.00	K Crabtree
Charollais	£125.00	CW Thomas	Texel	£92.00	R Haynes
Texel	£114.00	R Long	Texel	£92.00	JA Boulton
Texel	£105.00	K Crabtree	Texel	£91.50	GA Royans & Son
Suffolk	£96.00	GA Royans & Son	Texel	£91.50	T Barber & Son

### Breeding Sheep : 40 forward

A small dispersal for Messrs HP Read, Brill today saw mid March lambing stock sold through the ring. North Country Mule Ewes 4T to FM scanned at 266% to the Charollais sold to £142 with FM sisters to £120 at 200%. Charollais x Ewes 4T – FM scanned at 250% sold to £132, with FM £126 and broken mouth £110. Please call with any Breeders you may have to sell.

**Auctioneer: Tom Wrench**

EST  
1888

howkinsandharrison.co.uk  
Residential | Commercial | Rural

HOWKINS & HARRISON

## ANNUAL SALE OF GRAZING & MOWING GRASS

To be sold by auction on

Wednesday 9<sup>th</sup> March 2016 at 7pm

At Kilworth Springs Golf Club, North Kilworth LE17 6HJ

### Entries Include:

Location	Acreage	Grazing / Mowing
Huncote, Leicestershire	108	High Quality Mowing up to 4 Cuts
Stoke Golding, Hinckley	35	Cattle or Sheep with option to Mow
Sapcote, Leicestershire	9	Cattle or Mowing
Swinford, Leicestershire	132	Cattle or Sheep
Lutterworth Road, Walcote	9	Cattle
Upper Bruntingthorpe	75	Cattle
Ullesthorpe, Leicestershire	8	Cattle or Sheep
Gilmorton, Leicestershire	39	Mowing (1 Cut)
Welford, Northamptonshire	82	Cattle, Sheep with option to Mow
Yelvertoft, Crick	61	Sheep
Watford Road, Crick	5.5	Cattle or Sheep
Kilsby Lane, Rugby	6	Mowing
Newbold on Avon, Rugby	12	Cattle
Staverton, Daventry	25	Sheep

A Full Catalogue is available online or by post

Telephone: 01788 564680

7 – 11 Albert Street, Rugby, CV21 2RX

Email: [dispersal.sales@howkinsandharrison.co.uk](mailto:dispersal.sales@howkinsandharrison.co.uk)

*The funeral of the late  
Betty Hussey will take place at  
11am at St. Faith's Church, Kilsby  
on Wednesday 24th February*



J & B Gray  
Pailton Pastures  
**Pailton**  
Rugby  
CV23 0QN

[store@jbgrayfarming.co.uk](mailto:store@jbgrayfarming.co.uk)  
07973 159903 / 01788 832652

Your local family run grain storage solution whether it be  
long term/ short term/ full loads/ part loads.

Also available – whole farm (stubble to stubble) contracting  
operations.

GPS controlled Spraying and Fertiliser application.

**FREE MUCK**

Sawdust and straw mixed for Arable only Farm.  
Regular supply in exchange for free removal and provision of trailer  
Call 02476 697731

**FOR SALE**

Fodder Beet  
Atherstone are  
Call Dick Pickering on 01827 872267

**REQUIRED**

Full time general farm worker required on a beef and arable farm  
Enquiries to Robert Mitchell on 07973 963585  
Rugby area

**FOR SALE**

Working Collie Puppies ready now  
Both parents excellent workers  
Grandparents International Champions  
Contact Dave Mitchell or Ellie  
on 07955 673796  
Also big square bales of hay for sale

**FOR SALE**

4 Border Collie Dog Puppies  
8 weeks old, £250 each  
Call 07708 044065

**WANTED**

Cattle weigh crush  
Call 01788 570651

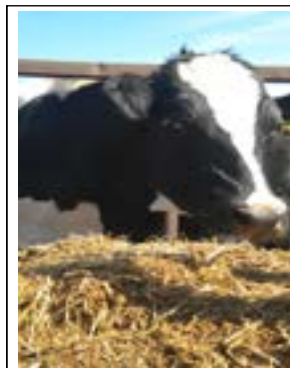
**FOR SALE**

100 Poplar Trees, open to offers  
Sheep hay rack on wheels, £20  
Sheep hurdles 6ft & 4ft

Call 01926 812598 after 6pm  
Lower Shuckburgh

**FOR SALE**

Single Ewe Lamb Adopter  
fits on the front of sheep hurdles  
galvanised, 2 bucket holders, adjustable head holder  
£55  
Call 07973 962887



**FINISHING CATTLE?  
GROWING CATTLE?  
FEEDING SHEEP?  
DO YOU WANT  
HIGH PERFORMANCE  
COST EFFECTIVE  
FULLY ASSURED  
AND  
COMPLETE FEEDS?**

THEN CONTACT

**BERRYSTOCK FEEDS**

TEL: 01788 890320  
E-MAIL: [john@berryfieldsfarm.co.uk](mailto:john@berryfieldsfarm.co.uk)  
[www.berrystockfeeds.co.uk](http://www.berrystockfeeds.co.uk)

BERRYFIELDS FARM  
DAVENTRY  
NN11 8NP



**TJ**  
**AGRICULTURAL LIMITED**

BRIDGE FARM 07836 264318  
ASHBY MAGNA 01455 202414

www.tj-agricultural.co.uk

MANUFACTURERS OF CATTLE PENS & SALE RING, STEEL FABRICATION, CATTLE FEEDERS, GATES, BARRIERS, DOG RUNS, INTERNAL STABLES, AUTOMATED GATES SUPPLIED & FITTED, TYRE SUPPLIES & HYDRAULIC HOSES MADE


# Farm Insurance Specialists

Call 01865 844994  
Visit [www.county-insurance.co.uk](http://www.county-insurance.co.uk)



County Insurance Services, County House, Dvina Court, London EC1A 3DF  
Lincoln, Nottingham, Derbyshire, Cheshire, Merseyside, Lancashire, Cumbria  
is authorised and regulated by the Financial Services Authority (FSA 146113)

— EST —  
1888 [howkinsandharrison.co.uk](http://howkinsandharrison.co.uk)  
Residential | Commercial | Rural



## GRANT FUNDING FOR 2016

With the new CAP Regime there is a renewed pot of money for Rural Funding through various programmes including:-


- Countryside Stewardship
  - multi-year agreements (mid-tier and Higher-tier)
  - Hedgerow and boundary Capital Grant Scheme
- LEADER funding
- Rural Growth Programme
- STEPS Grant (Severn Trent Water)

The main aims of the programmes are:-

- Improve water quality and management
- Improve, maintain and restore important natural habitats
- Improve and promote rural businesses
- Promote tourism and education
- Improve rural services and infrastructure



If you are looking at diversification projects, new business ideas, improving habitats and environmental features on farm and ways of improving yards and buildings to minimise the effect of water run-off then there may be a grant available to help you.

Please contact one of our Rural team at Rugby, Atherstone or Ashby de la Zouch for more information.



We have been informed that there is a new tranche of EIB funds available from the AMC. This is for a short period of time only, and funds are limited, but you could get up to 0.80% discount on money borrowed for capital projects or investments.  
Speak to Jeremy Watson or James Collier to find out more.

**Rugby: 01788 564680**      **Atherstone: 01827 718021**

 [facebook.com/HowkinsandHarrison](https://facebook.com/HowkinsandHarrison)       [twitter.com/HowkinsLLP](https://twitter.com/HowkinsLLP)

[howkinsandharrison.co.uk](http://howkinsandharrison.co.uk)      Residential | Commercial | Rural



## NORTHANTS LAND DRAINAGE CONTRACTORS LTD

Althorpe Park Station  
East Haddon  
Northamptonshire. NN6 8DH



### TRENCHING SPECIALISTS



Trench Excavations from 100mm to 500mm width  
Laser Control on all Machines  
Civil Engineering Contracts  
All Types of Fencing  
Road Drainage  
Slurry Lagoons  
Bulk Excavation & Site Clearance  
Plastic, Clay & Concrete Pipes Laid

Tel: 01604 770410 / 770320 Fax: 770406

## HOWKINS & HARRISON

### *Daventry District Council Settlements and Countryside Local Plan (Part 2a) Issues and Options Consultation and Call for Housing Sites – Now is the time to act*

Daventry District Council is currently consulting on its Part 2a Settlements and Countryside Local Plan - Issues and Options.

The Part 2a Local Plan will be used by the Council to guide decisions on planning applications.

The Council is seeking comment on key issues, including housing. As part of this, the Council is undertaking a 'call for sites' for potential housing sites. We would be pleased to submit sites to Council on your behalf.

**The deadline for submissions including submission of sites is 11<sup>th</sup> March 2016 at 4.30pm**

Please contact the following for further information:

John Clarke on 01788 564679 john.clarke@howkinsandharrison.co.uk or  
Roy Hammond on 01788 564676 roy.hammond@howkinsandharrison.co.uk

**7 – 11 Albert Street, Rugby, CV21 2RX**  
**www.howkinsandharrison.co.uk**

# MIDLAND FEED SERVICES LTD

## “ Quality Feed at Competitive Prices ”

**Midland Feed Services Ltd** provides a complete on-farm milling and mixing service. Rations can be varied from week to week and are precisely mixed to suit your animals - throughout their lifecycle. Our fleet of eight vehicles operates across the midlands and we are trusted for our friendly and reliable service.

### FEED FLEXIBILITY OPTIMIZES PROFITABILITY

- Rolled or ground
- Bulk or bagged
- Custom mixes
- Rations for all livestock
- Free nutritional back-up
- Analysis service available
- Weekly service in your area
- All types of bale processed
- Roughage processed for bedding
- Utilised straights and by-products
- Minerals and concentrates
- Sucked, blown and augered
- Liquid molasses
- Large or small quantities
- Variations to seasonal needs

**Call us to discuss your requirements.**

**T: 01789 205391 / 266503**

DAIRY BEEF PIG SHEEP HORSE



www.midlandfeed.co.uk





Your local, independent  
farm fuels, heating oil &  
lubricants supplier.



**Proud to be supporting  
The Rugby Farmers Market**

01675 437557 | [midlands@rix.co.uk](mailto:midlands@rix.co.uk) | [www.rix.co.uk](http://www.rix.co.uk)



**THE 59<sup>th</sup> MIDSHIRES PRODUCE AUCTION**  
**Approx. 3,500 Tonnes on Farms and Estates**  
**in the Central Midland Counties**

To include a comprehensive selection of  
**HAY, STRAW, SILAGE & HAYLAGE**  
in all sizes & easily accessible to towns  
within a 50 mile radius of Rugby

*Including a Consignment of Hay for Immediate Delivery*

**TO BE SOLD BY AUCTION ON**

**TUESDAY 8<sup>TH</sup> MARCH 2016 AT 2.30PM**

**AT The A5 Service Park, Rugby, CV23 0AE**

*(2 miles North Junction 18, M1 motorway)*

**ON INSTRUCTIONS FROM THE EXORS OF THE LATE MR PETER UPSTONE**

**GLEBE FARM, WASPERTON, WARWICK, CV35 8EE**

*(2 ½ Miles South Junction 15, M40 Motorway)*

**A COMPLETE FARM DISPERSAL SALE**

*Comprising*

2004 Same Explorer II Top 90 4WD Tractor

1986 Renault 68.12 2WD Tractor c/w Trima 340 Power Loader

1975 Massey Ferguson 525 Super II Combine Harvester

2007 Ford Ranger Pick Up c/w Ifor Williams Canopy

*Farm Machinery To Include*

2007 Reco Sulky RC 1150 Fertiliser Spreader, Twose 2.2m Offset Rotary Pasture

Topper, Taarup 305 Mower Conditioner, New Holland 276 Super Hayliner Baler,

Russell 56 Bale Carrier, Ifor Williams 3.6m Livestock Trailer, Salop 4T. Grain Trailer

*Together With*

Sheep Handling Equipment

Vintage Machinery, Workshop Equipment,

QSS 1,000 Litre Electric Fuel Station

***Numerous Items Included by Permission***

***Approx. 450 Lots in Total***

**TO BE SOLD BY AUCTION ON THE PREMISES**

**SATURDAY 12<sup>TH</sup> MARCH 2016 AT 10.30AM**

**Telephone: 01788 564749**

**7 – 11 Albert Street, Rugby, CV21 2RX**

**Email: [dispersal.sales@howkinsandharrison.co.uk](mailto:dispersal.sales@howkinsandharrison.co.uk)**

Tom Reeve Contracting

## Agricultural, Commercial & Domestic Fencing



For all your fencing needs.  
Post and Rails,  
Stock Fencing,  
Panel Fencing,  
Close board Fencing,  
HLS/ELS Fencing,  
Hedge Coppicing,  
Tree and Hedge planting,  
& Much More.

**Always happy to quote.**



For more information or to contact Tom on;  
**01926 814731 or 07807 693858**  
[tom.reeve@aol.co.uk](mailto:tom.reeve@aol.co.uk)  
Also for Slot seeding, (Pasture improvement).  
Opico splitter for pasture de-compaction.

# T A R H I R E

## FOR HIRE

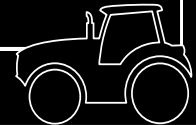
10 TON REAR DISCHARGE MUCKSPREADERS WITH SLURRY DOORS  
12 TON TRAILERS WITH HYDRAULIC DOORS

## CONTRACT

MUCK SPREADING SERVICE  
ADAPTABLE TO CUSTOMER NEEDS

**ROB DAWKINS (DAVENTRY) – 07801 791212**  
**ALAN CRAWLEY (HINCKLEY) – 07802 951179**  
**OFFICE – 01327 340367**

## FARM INSURANCE WHERE YOUR OFFICE IS OUR OFFICE



We believe it's better to take the time meeting face to face on a farm, not around a desk.

**Call 02476 444519 for a quote or pop in**  
NFU Office, Meridian House, 6 Eastwood  
Business Village, Harry Weston Road, Binley  
Business Park, Coventry, Warwickshire CV3 2UB



**NFU Mutual**  
INSURANCE | PENSIONS | INVESTMENTS

It's about time®

Agent of The National Farmers Union Mutual Insurance Society Limited. For security and training purposes, telephone calls may be recorded and monitored.

# Rugby Farmers Mart Ltd

## Forthcoming Sales 2016

**7th March**

Sale of Store Cattle

**18th March**

Sale of Store Cattle

**4th April**

Sale of Store Cattle

**11th April**

Spring Lamb Show & Sale

Vendors who are wishing to sell stock please feel free to contact:

**Tom Wrench - 07774 723758**

**Steve Martin - 07960 085950**

who will gladly make  
A FREE ON FARM VISIT & VALUATION